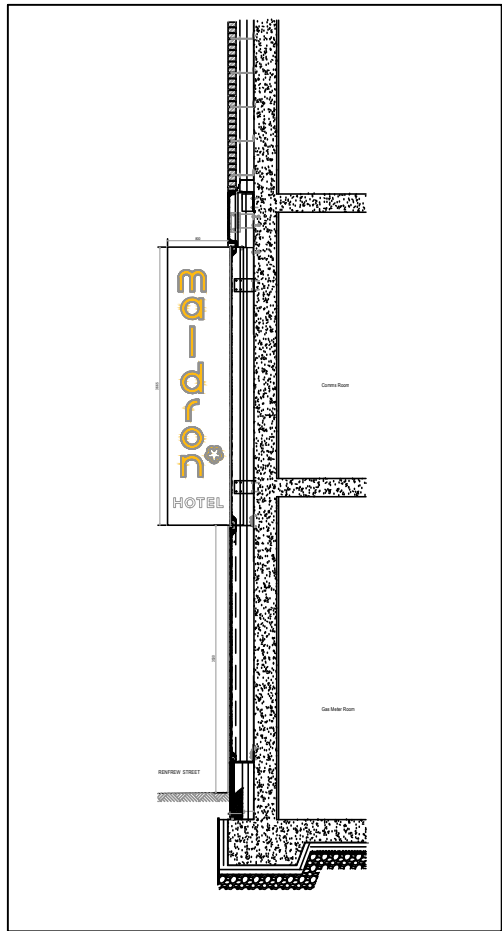


GLASGOW CITY COUNCIL STREET LIGHTING  
TYPICAL WALL/FACADE MOUNTING REQUIREMENT



MALDRON SIGNAGE – EXTERNAL ILLUMINATED SIGNAGE  
POWER SUPPLY OPERATED THROUGH A SUITABLY RATED  
& POLED CONTACTOR/ PHOTOCELL/ H/O/A SWITCH  
ARRANGEMENT.  
FINAL LOCATION/ARRANGEMENT TO BE AGREED WITH  
SIGNAGE MANUFACTURER PRIOR TO FIRST FIX. THE  
BUILDING SIGNAGE LIGHTING IS TO BE CONTROLLED VIA  
SUITABLY RATED TIME SWITCH WITH MASTER OVERRIDE  
SWITCH LOCATED WITHIN MANAGERS/RECEPTION OFFICE  
(T.B.C), FED VIA DEDICATED LIGHTING CONTACTOR. ALL  
SIGNAGE TO REMAIN ON DURING NIGHT HOURS. CARRY  
OUT WIRING USING XLPE/SWA/LSF.  
TERMINATE EACH CABLE WITHIN A BACK ENTRY BESA  
BOX, COMPLETE WITH DOME LID AND GASKET  
SIGN TO BE FITTED DIRECTLY TO BUILDING USING  
APPROPRIATE FIXINGS.

DB-EL/1/L1

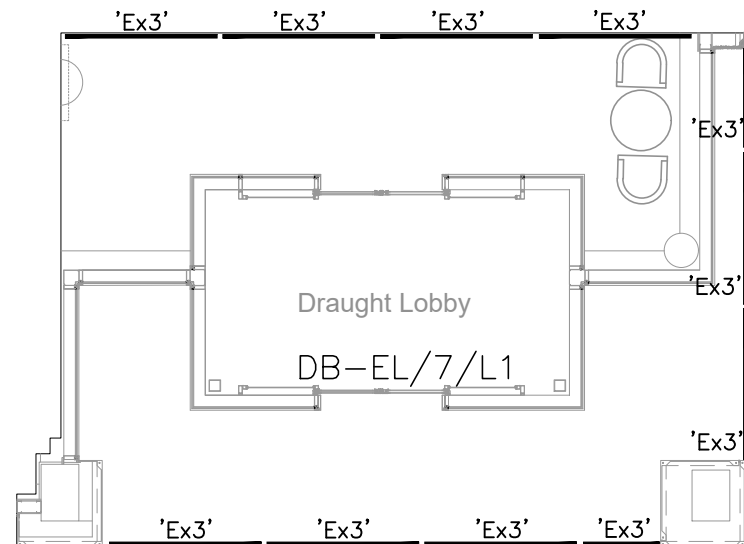


MALDRON SIGNAGE – EXTERNAL ILLUMINATED SIGNAGE  
POWER SUPPLY OPERATED THROUGH A SUITABLY RATED  
& POLED CONTACTOR/ PHOTOCELL/ H/O/A SWITCH  
ARRANGEMENT.  
FINAL LOCATION/ARRANGEMENT TO BE AGREED WITH  
SIGNAGE MANUFACTURER PRIOR TO FIRST FIX. THE  
BUILDING SIGNAGE LIGHTING IS TO BE CONTROLLED VIA  
SUITABLY RATED TIME SWITCH WITH MASTER OVERRIDE  
SWITCH LOCATED WITHIN MANAGERS/RECEPTION OFFICE  
(T.B.C), FED VIA DEDICATED LIGHTING CONTACTOR. ALL  
SIGNAGE TO REMAIN ON DURING NIGHT HOURS. CARRY  
OUT WIRING USING XLPE/SWA/LSF.  
TERMINATE EACH CABLE WITHIN A BACK ENTRY BESA  
BOX, COMPLETE WITH DOME LID AND GASKET  
SIGN TO BE FITTED DIRECTLY TO BUILDING USING  
APPROPRIATE FIXINGS.

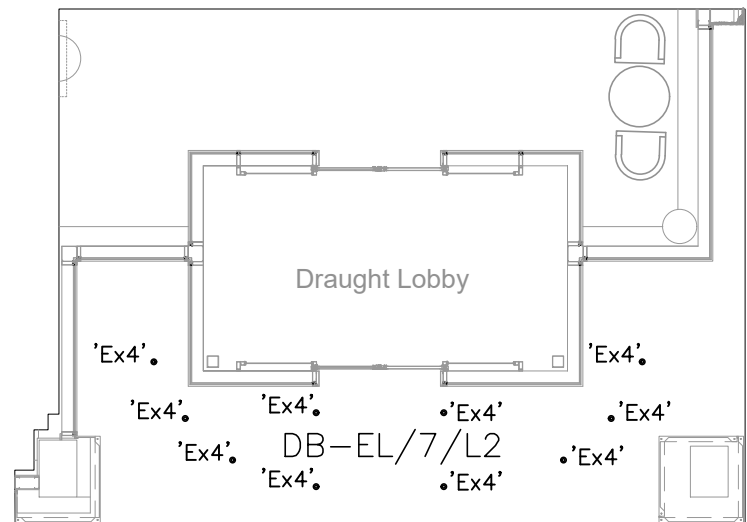
DB-EL/6/L1

MALDRON SIGNAGE – EXTERNAL ILLUMINATED SIGNAGE  
POWER SUPPLY OPERATED THROUGH A SUITABLY RATED  
& POLED CONTACTOR/ PHOTOCELL/ H/O/A SWITCH  
ARRANGEMENT.  
FINAL LOCATION/ARRANGEMENT TO BE AGREED WITH  
SIGNAGE MANUFACTURER PRIOR TO FIRST FIX. THE  
BUILDING SIGNAGE LIGHTING IS TO BE CONTROLLED VIA  
SUITABLY RATED TIME SWITCH WITH MASTER OVERRIDE  
SWITCH LOCATED WITHIN MANAGERS/RECEPTION OFFICE  
(T.B.C), FED VIA DEDICATED LIGHTING CONTACTOR. ALL  
SIGNAGE TO REMAIN ON DURING NIGHT HOURS. CARRY  
OUT WIRING USING XLPE/SWA/LSF.  
TERMINATE EACH CABLE WITHIN A BACK ENTRY BESA  
BOX, COMPLETE WITH DOME LID AND GASKET  
SIGN TO BE FITTED DIRECTLY TO BUILDING USING  
APPROPRIATE FIXINGS.

DB-EL/5/L1



SOFFIT LIGHTING LAYOUT



CANOPY MOUNTED LUMINAIRES

## NOTES

NOTES DETAILED ON ALL DRAWINGS APPLY WHERE  
APPROPRIATE

PLEASE REFER TO THE ELECTRICAL SPECIFICATION FOR THE  
LUMINAIRES SCHEDULE

THE EMERGENCY / ESCAPE LIGHTING INSTALLATION  
SHALL COMPLY IN FULL WITH THE REQUIREMENTS OF BS  
5266-1: 2016, BS 1838: 2013

THE LIGHTING INSTALLATION SHALL COMPLY IN FULL  
WITH THE REQUIREMENTS OF BS 7671.

THE ELECTRICAL CONTRACTOR IS TO ALLOW FOR THE  
PROVISION OF PHASE BARRIERS AND ENGRAVING OF  
MULTI-GANG SWITCH PLATES INCLUDING EMERGENCY  
LIGHTING TEST KEY SWITCHES ADJACENT TO THE LOCAL  
DISTRIBUTION BOARDS WITH "WARNING 400V PRESENT".

THE LIGHTING CONTROLS MANUFACTURER, WITH  
ASSISTANCE FROM THE ELECTRICAL CONTRACTOR  
SHALL CARRY OUT THE COMMISSIONING OF THE  
SYSTEM.

THE ELECTRICAL CONTRACTOR SHALL PROCURE,  
SUPPLY, INSTALL, TEST, COMMISSION AND SET TO WORK A  
COMPLETE, FULLY OPERATIONAL LIGHTING AND LIGHTING  
CONTROL SYSTEM, IN-LINE WITH THE ASPIRATIONS OF THE  
CLIENT AND DETAIL OF ALL NOTES.

ALL LIGHTING SHALL HAVE CLEARANCE FROM ANY INSULATION  
AS HIGHLIGHTED WITHIN THE MANUFACTURES HAND BOOK.

THE LUMINARE HEAT DISSIPATING AREAS SHALL NOT HAVE  
THE AIR FLOW OBSTRUCTED IN ANY WAY.

ALL REFLECTORS, COVERS OR VISUAL AREAS SHALL BE CLEAN  
AND FREE FROM DIRT PRIOR TO LIGHTING LEVELS  
COMMISSIONED.

THE ELECTRICAL CONTRACTOR IS TO INCLUDE WITHIN  
THEIR TENDER ALL LUMINAIRES, ACCESSORIES, PLUG-INS,  
MOUNTING KITS AND POWER SUPPLIES WERE NECESSARY  
COMPLYING TO CURRENT BUILDING REGULATIONS, SO AS TO  
ENSURE A COMPLETE AND OPERATIONAL INSTALLATION.

LOCATION OF ALL SWITCHING TO BE IN ACCORDANCE  
WITH BS 8300 AND BUILDING REGULATIONS APPROVED  
DOCUMENT M.

THE LIGHTING OPERATION TIMES SHALL BE CONFIRMED  
BY THE USER TO ALLOW FOR COMMISSIONING AND  
NECESSARY DEMONSTRATIONS OF CONTROLS.

ALL FACADE LIGHTING TO HAVE THE FACILITY TO BE  
MANUALLY CONTROLLED SWITCHED TO COMPLY WITH BREEM  
ENE03 & POL04. FINAL LIGHTING CONTROL TO BE AGREED  
WITH THE CLIENT PRIOR TO FIRST FIX.

ALL LIGHTING SPECIFIED IS IN ACCORDANCE WITH THE  
GUIDANCE CONTAINED IN REGARDS ENERGY EFFECTIVE  
LIGHTING DESIGN AND SPECIFICATION.

THE EXTERNAL LIGHTING MUST BE CONTROLLED  
AUTOMATICALLY BY A LIGHT SENSITIVE PHOTOELECTRIC CELL  
AND ELECTRIC TIME CLOCK (IN SERIES), WITH MANUAL  
OVERRIDE (AUTO/OFF/ON) AND BE PROTECTED BY RCBO'S  
ON THE EXTERNAL LIGHTING BOARD/RELAYS WITH CONTACTORS  
IN ASSOCIATION WITH THE SMS MUST BE CONTROLLED BY  
ALL EXTERNAL AREAS AND THE HOTEL SIGNALIZATION.

THE ELECTRICAL CONTRACTOR MUST PROVIDE THE ELECTRICAL  
INSTALLATION FOR THE HOTELS ILLUMINATED SIGNS (USUALLY  
TRANSFORMER BOXES, CONTAINMENT, SWITCHING AND ALL  
CABLING ETC.)

ALL CIRCUITS SERVING EXTERNAL LIGHTING SHALL BE  
SUPPLIED VIA TYPE C RCBO CIRCUIT BREAKERS

## SPECIFICATION FOR RECESSED STREET LIGHT WALL BOX

TO BE MANUFACTURED FROM 3MM STEEL AND GALVANISED TO  
BS729 WITH A HINGED COVER AND WOODEN BACKBOARD  
(380mm x 180mm MINIMUM) WITH AN INTERNAL DEPTH OF  
130mm

THE LOCK IS TO BE A 8mm STAINLESS STEEL TRI-HEAD  
SCREW.

N EARTH FLY LEAD IS REQUIRED TO THE BOX LID.  
THE LID SHALL INCLUDE A HAZARD WARNING SIGN TO  
BS5378

T2	11.09.19	TENDER DESIGN UPDATE	BP	LW
T1	JUL 19	EXTERNAL LIGHTING PROPOSAL	BP	LW

REV	DATE	DESCRIPTION	DR	CK
-----	------	-------------	----	----

# Caldwell

## CONSARC

JOB  
RENFREW STREET, GLASGOW  
MALDRON HOTEL

DRAWING  
ELECTRICAL SERVICES INSTALLATION  
RENFREW STREET  
EXTERNAL FACADE LIGHTING  
DRAWING 1 – 2

DRAWING No./REVISION		T2	
3840/E700			
SCALE/PRINTED AT	DATE	DRAWN	CHECKED
1:100@A1	APR 19	BP	LW
UNIT 6 FORESTROVE BUSINESS PARK NEWTOWNBRED A BELFAST BT8 6AW		TEL: 02890699720 FAX: 02890641625 E-MAIL: admin@caldwellconsulting.net	

INCLUDE ALL NECESSARY OFFSETS OF  
SERVICES IN CEILING VOIDS, SERVICE  
DUCTS AND ALL OTHER AREAS TO ACHIEVE  
CROSSOVERS AND CO-ORDINATION OF  
MECHANICAL AND ELECTRICAL SERVICES.